



## Tratec ShipLoader Banana

### High capacity and extreme range in all directions

The TSL-B shiploader is a well proven solution in the harsh environment of Norway. It handles all types of weather and is corrosion protected to Norwegian offshore standards.

The arm of the loader can be moved in all 3- axes and has a very impressive range of reach.

It is equipped with a chute to avoid dust to the environment and also avoid the product to be crushed through reducing the speed of the falling product going into the boat. Chute is optional and without chute free weight capacity may be used to extend other capacities.

#### Technical Specifications

The loader is designed to load Ship vessels of 60 000 DWT and with a rated loading capacity of 3000t per hour of a product with 1400 kg pr. m<sup>3</sup> weight and belt speed 1,5m/s.

The solution is very flexible and the loading capacity may be increased by increasing the belt speed with up to 30-50%.

The loader is designed and produced according to the strict energy standards of Norway.

Delivered with rubber skirting and top Cover to prevent dust and humidity into the product

#### Features & Benefits

- Potential Ship size also over 60000 DWT
- Outreach of chute over vessel 14,5m-31,9m (17,4 m)
- Chute extension 15,1 m
- Max. loading capacity up to 4500t per hour
- Rotating range 220 degrees
- Horizontal movement 15,2m
- Vertical movement 15 degrees
- Belt width of conveyor 1600mm
- Power installed approx 500kw
- Remote control as standard
- Operating conditions: -50 to +40°C can be delivered



Tratec Solutions AS  
[www.Tratec.no](http://www.Tratec.no)

# Tratec ShipLoader Banana

## High capacity and extreme range in all directions

### Range of Vertical & horizontal movement

The sketch is showing the angle of the vertical movement and showing the potential movement of the chute in outer/inner position of the beam as well as the upper and lower point of the beam

- Reach/range over vessel hatch opening 18,4m

### Vertical movement range of the beam

Showing the angle of upper and lower point of the beam

- 15 degrees

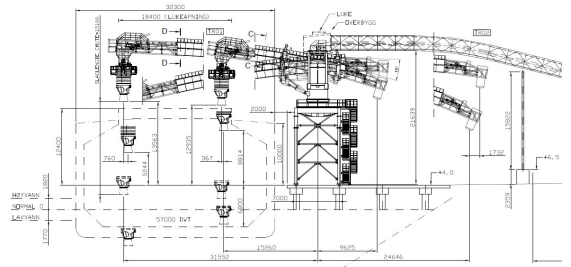
### Feeding Conveyor

- 103 m from center feeding conveyor to center of ship loader
- 17 degrees angle of loading conveyor

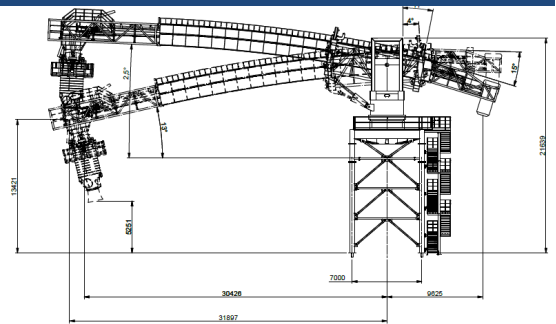
### Operator Cabin

Solution is supplied with an operator cabin located on the side of the beam. This is to give the operator good working conditions and the best overview of the loading process. This operator cabin is optional as the remote control is the standard solution.

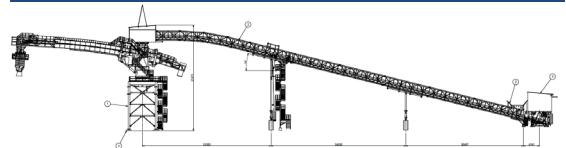
Range of movement



Angle range of the beam



Feeding conveyor and Ship loader



Operator cabin



TRATEC



Tratec Solutions AS  
[www.Tratec.no](http://www.Tratec.no)